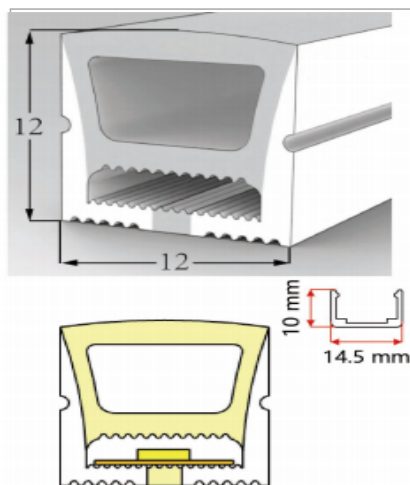




# SPECIFICATION

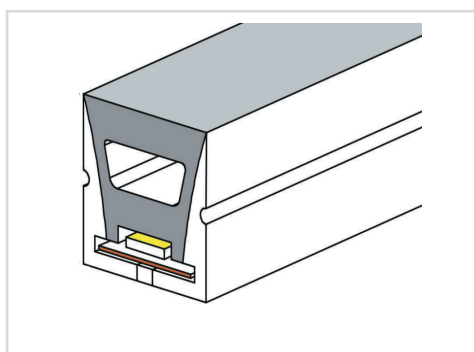
Shenzhen Rose Lighting Technology Co.,Ltd  
Web: <https://www.rose-lighting.com>  
Web: <https://www.rose-lighting.cn/>  
T: +86-186-7564-9004 (wechat QQ )  
whatsapp:+8618123676583  
E: [info@rose-lighting.com](mailto:info@rose-lighting.com)

# RL 1212 NEON LED Strip Lighting



PCB Width(MM)	8mm
Voltage( V)	12/24V
Power (W/M)	12-18
CCT (K)	3000K±150 4000K±250 6500K±450
Luminous (LM)	720-1080
Luminous Efficiency (LM/W)	60
CRI (RA)	>80
Size(MM)	16X16mm
Working Temperature	-20~50 °C
IP Grade	IP68

## Structure & Introduction

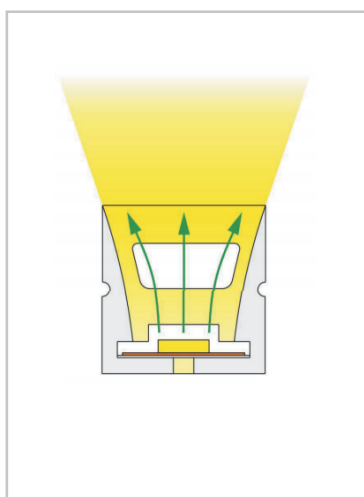


Sectional View

1. Front Luminous Surface:	Uniform and soft , no light spot
2.PCB:	Width: 10/12mm LED Qty:120/pcs LED Type:2835
3.Cutting Point :	Visible
4. Fixer Notch:	Fix strip by clips
5. Light-Blocking Surface:	Block light and prevent light leakage

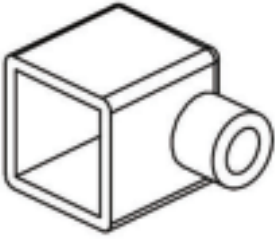


## Product Features



- Professional structural design, Uniform and soft luminance, no light spot.
- Anti-yellowing and heat resisting silicon glue, available for outdoor environment.
- Anti-corrosion, acid and alkali, etc, can be used in extremely harsh environments, has good waterproof performance.
- Excellent flexibility to shape optionally.

# Installation Accessories



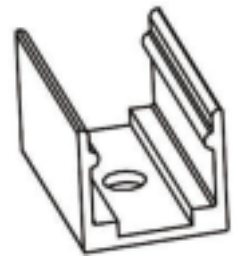
Side outlet plug(Left, right and bottom outlets are available)



Straight outlet plug



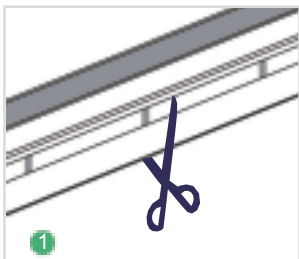
End Cap



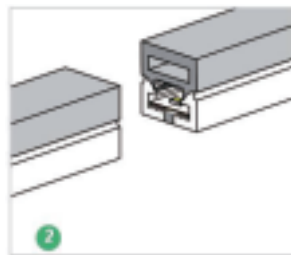
Fixed clip

# Installation Instructions

## Cutting Method

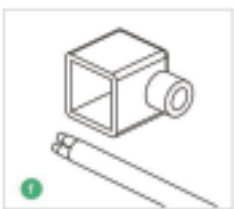


Cut along the black point on the side of led strip.

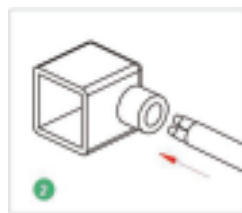


Finished the cutting

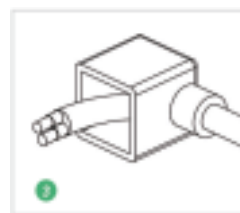
## ( Side outlet ) Plug installation method



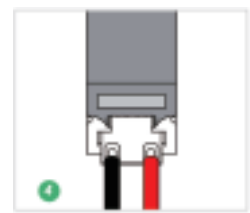
Prepare plug and wire



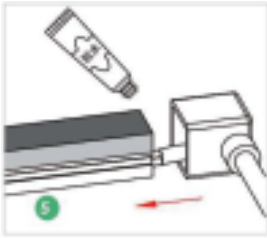
Put the wire in the direction



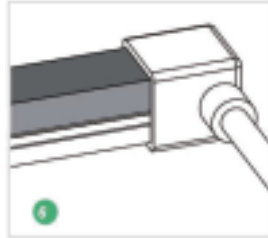
After wearing it



Solder the wire to the PCB board, the red wire for the anode, black wire for negative pole Cathode



Put glue in the section, insert the section into the plug according to direction of arrow

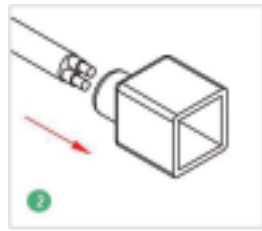


After installing, it can't be moved until 2~3 hours, and 12 hours for packing

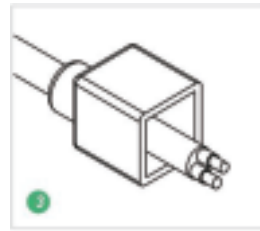
### ( Straight Outlet Plug ) Plug installation method



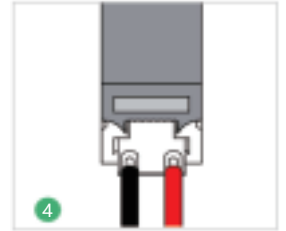
Prepare plug and wire



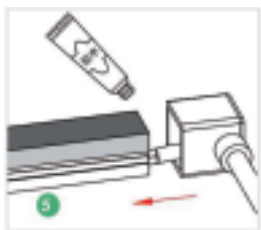
Put the wire in the direction



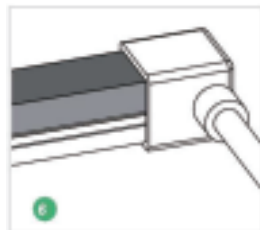
After wearing it



Weld the wire to the bare board the red wire of the anode, the cathode of the black negative wire



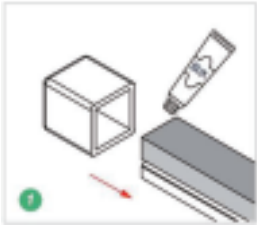
Put glue in the section, insert the section into the plug according to direction of arrow



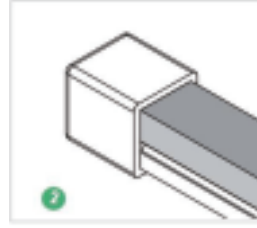
After installing, it can't be moved until 2~3 hours, and 12 hours for packing

---

## (End plug ) Installation method



Apply glue to the end of the casing and install the plug in the direction of the arrow.



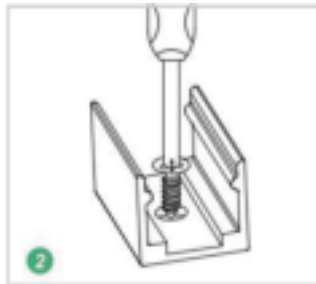
After installing, it can't be moved until 2~3 hours, and 12 hours for packing

---

## (Fixed clip ) Installation method



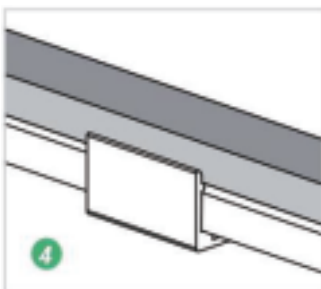
Prepare Screws and fixed clips



Put the clips on a proper position and insert the screw to fix it



Put the light surface of the lamp, Firmly insert the light bar into the fixing buckle



The installation is complete

# Precautions

When installing the light strip, please notice that the strips are not bendable to all directions. As the appropriate specific shape and degree, please follow the following instruction to avoid damaging the light bar.

## Correct bending way



Face to the light surface, fold the strip, the minimum bending diameter is 300mm



Five meters per roll, the package (reel) cuts inward (as shown), the minimum bending diameter is 400mm

➤ LED strips are low voltage products, you must use the power supply(transformer). Do not connect the led strip directly to the AC 110v or AC 220v, otherwise it will burn out the LED strips and lead to safety (security) accidents.

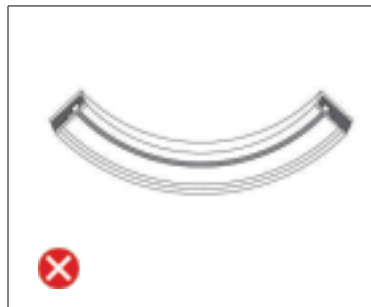
➤ Please read the specifications thoroughly before installation by professional staff to make sure the safe use.

➤ **Attention:** For packing a longer light strip, the inner diameter must be larger to avoid breaking the PCB board inside.

## Incorrect bending way



Face to the side surface,(as the picture, shows) Do not bend downward to damage the strip



Face to the side surface,(as the picture shows) Do not bend downward to damage the strip

➤ The PCB inside the bushing is side mounted and can only be bent sideways.

